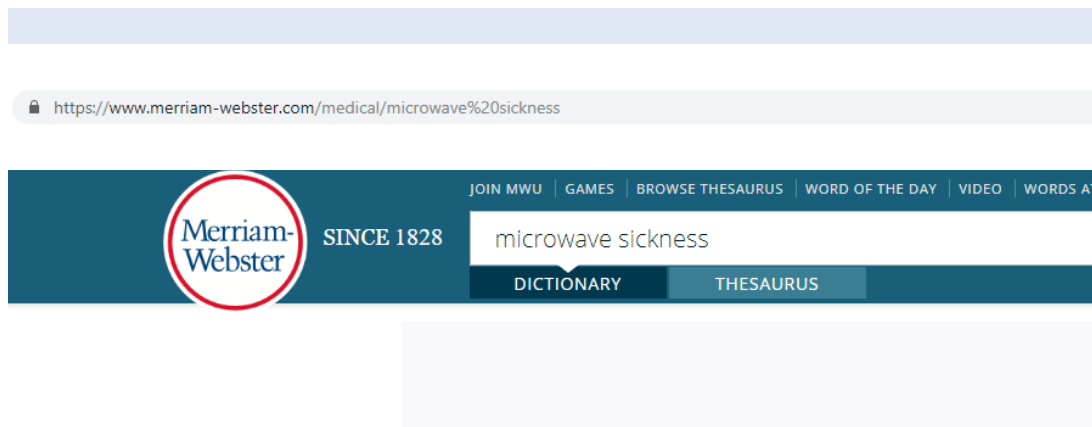


# Microwave Sickness is a Medical Diagnosis

**microwave sickness** (medical definition, Merriam Webster):

: a condition of impaired health reported especially in the Russian medical literature that is characterized by headaches, anxiety, sleep disturbances, fatigue, and difficulty in concentrating and by changes in the cardiovascular and central nervous systems and that is held to be caused by prolonged exposure to low-intensity microwave radiation

<https://www.merriam-webster.com/medical/microwave%20sickness>



## microwave sickness noun

### Medical Definition of *microwave sickness*

: a condition of impaired health reported especially in the Russian medical literature that is characterized by headaches, anxiety, sleep disturbances, fatigue, and difficulty in concentrating and by changes in the cardiovascular and central nervous systems and that is held to be caused by prolonged exposure to low-intensity microwave radiation

Microwave Sickness has been diagnosed with the following ICD-10 codes

(ICD = International Statistical Classification of Diseases)

<https://www.icd10data.com/ICD10CM/Codes>

- [L57](#) Skin Changes due to Chronic Exposure to Non-Ionizing Radiation
- [T66](#) Radiation Sickness, Unspecified
- [W90.0](#) Exposure to radiofrequency
- [Z58.8](#) Other Problems Related to Physical Environment
- [995.3](#) (ICD-9) Non-Specific Allergies (used in Court in Madrid, Spain)

# 41 US Diplomats have Microwave Sickness

Since 2016, 41 US Diplomats in Cuba and China suffered mysterious brain injuries without having been physically attacked. Their symptoms:

- Headaches
- Concentration Problems
- Memory Loss
- Nosebleeds
- Sleeping Problems
- Fatigue
- Nervousness

**US government investigation concluded microwave weapons involved:**

•NBC, 9-11-18: <https://www.nbcnews.com/news/latin-america/u-s-officials-suspect-russia-mystery-attacks-diplomats-cuba-china-n908141>

•CBS 60 minutes, 3-17-19: <https://www.cbsnews.com/news/brain-trauma-suffered-by-u-s-diplomats-abroad-could-be-work-of-hostile-foreign-government-60-minutes/>

**Happened before at US embassy in Moscow during the Cold War from 1950-1970s:**

<https://ecfsapi.fcc.gov/file/7020348142.pdf>

**Dr. Beatrice Golomb, M.D., Ph.D, professor of medicine at UC San Diego, provided evidence that microwave sickness is what the diplomats were most likely suffering from (Sep. 2018):**

[https://www.mitpressjournals.org/doi/full/10.1162/neco\\_a\\_01133?url\\_ver=Z39.88-2003&rfr\\_id=ori:rid:crossref.org&rfr\\_dat=cr\\_pub%3dpubmed](https://www.mitpressjournals.org/doi/full/10.1162/neco_a_01133?url_ver=Z39.88-2003&rfr_id=ori:rid:crossref.org&rfr_dat=cr_pub%3dpubmed)

## Leakage of the Blood Brain Barrier From Microwave Radiation (Salford et al 2008)

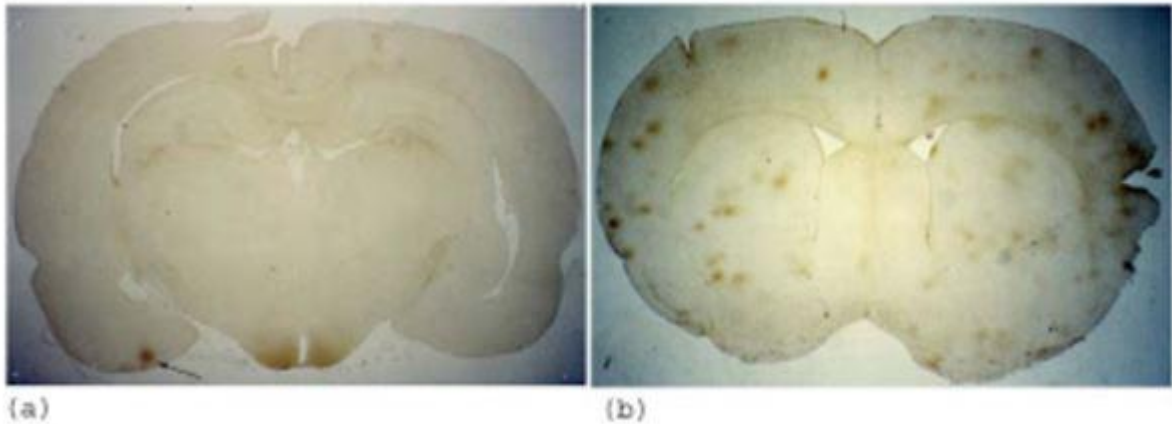
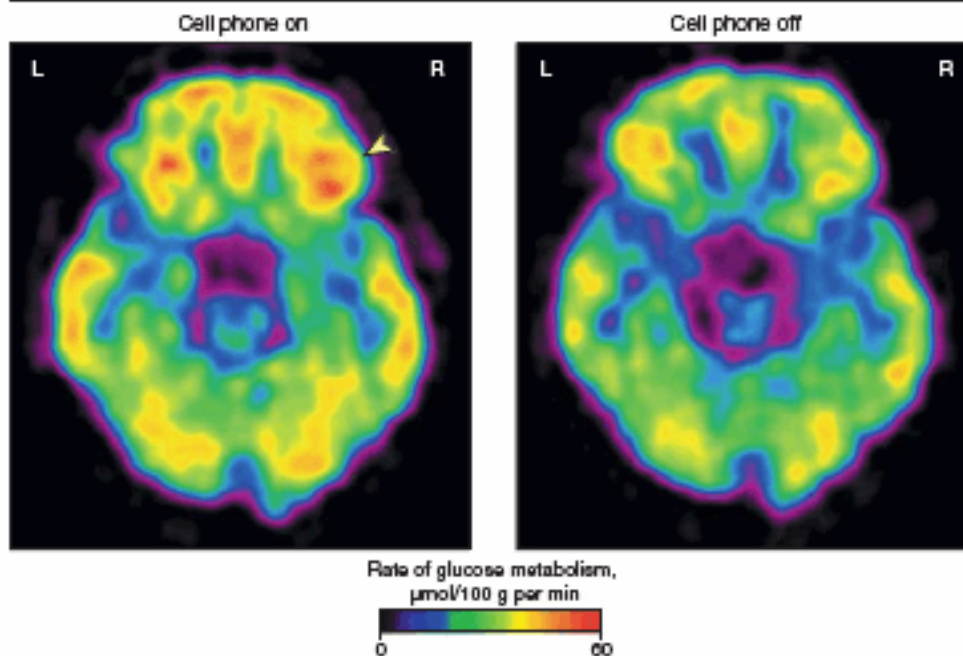


Figure 1

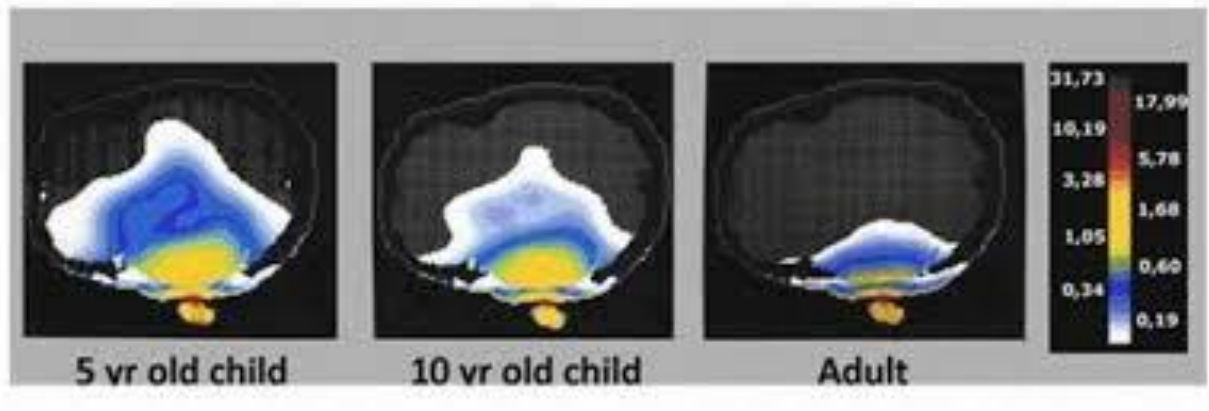
## Increased Brain Glucose Metabolism In Humans from Cell Phones (Volkow 2011)

Figure 2. Brain Glucose Metabolic Images Showing Axial Planes at the Level of the Orbitofrontal Cortex



Images are from a single participant representative of the study population. Glucose metabolism in right orbitofrontal cortex (arrowhead) was higher for the "on" than for the "off" condition (see "Methods" for description of conditions).

# Penetration of Radiation from Cell Phone to the Brain (Gandhi 1996)



## Brain Scans Show EHS is Physiological (Heuser 2017)

### Brain Differences in EHS compared to non-EHS

(Heuser 2017)

fMRI of Adult, no EHS

fMRI of Adult, with EHS

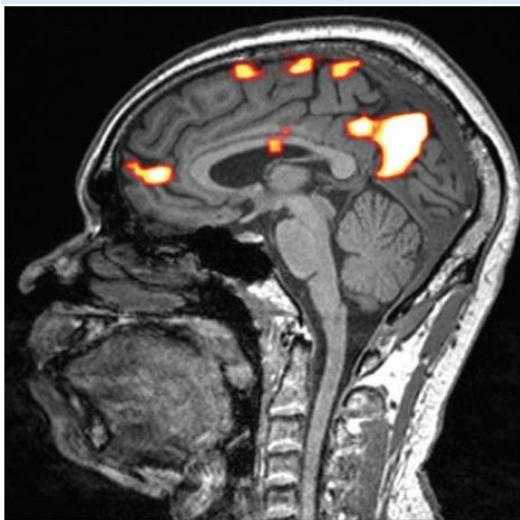


Figure 11: Lateral view of a normal fMRI. Note absence of abnormal white areas seen in our patient group.

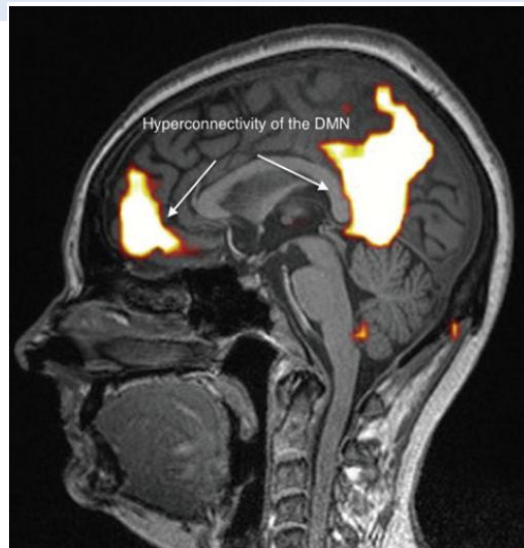


Figure 4: Lateral view of case no. 4.

# US has NO Safety Standards, only Industry Recommended Exposure Guidelines

FCC:

"there is no federally developed national standard for safe levels of exposure to radiofrequency (RF) energy" ...

"government agencies ...have generally relied on RF exposure standards developed by expert non-government organizations such as the Institute of Electrical and Electronics Engineers (IEEE) and the National Council on Radiation Protection and Measurements (NCRP)."

<https://www.fcc.gov/consumers/guides/wireless-devices-and-health-concerns>



[Home](#) / [For Consumers](#) /

## Wireless Devices and Health Concerns

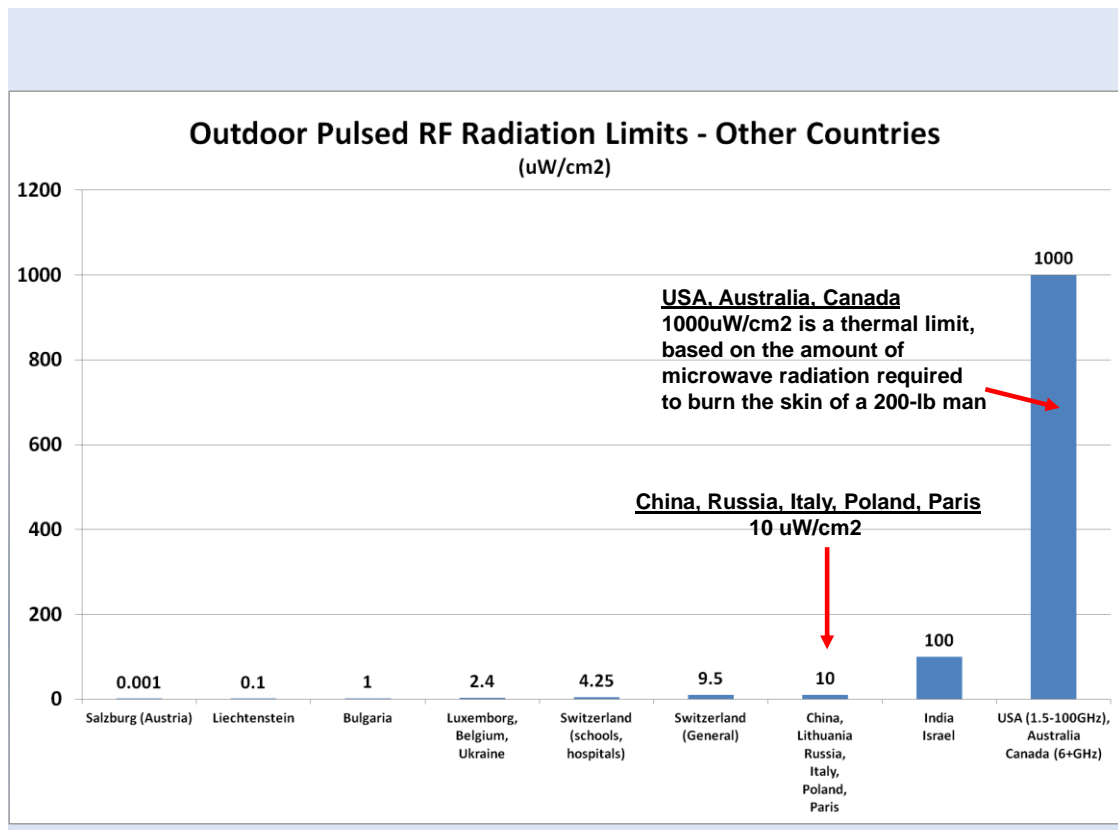
[More Guides in English \(/consumer-guides\)](#)

[Español \(/consumers/guides/aparatos-inalambricos-e-inquietudes-d](#)

### Current Exposure Limits

While there is no federally developed national standard for safe levels of exposure to radiofrequency (RF) energy, many federal agencies have addressed this radiofrequency (RF) energy. The FCC's guidelines and rules regarding RF exposure are based upon standards developed by IEEE and NCRP

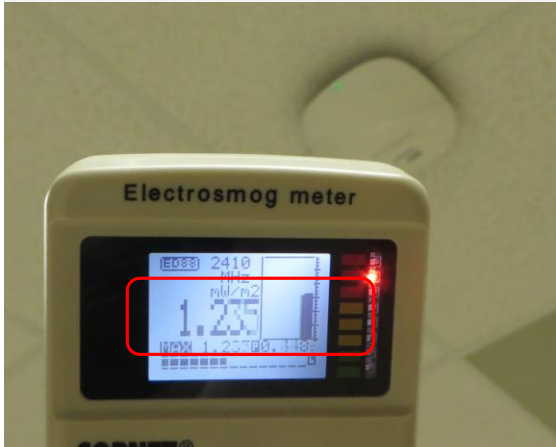
## US Exposure Limits Higher than Europe, China



# Distance Important:

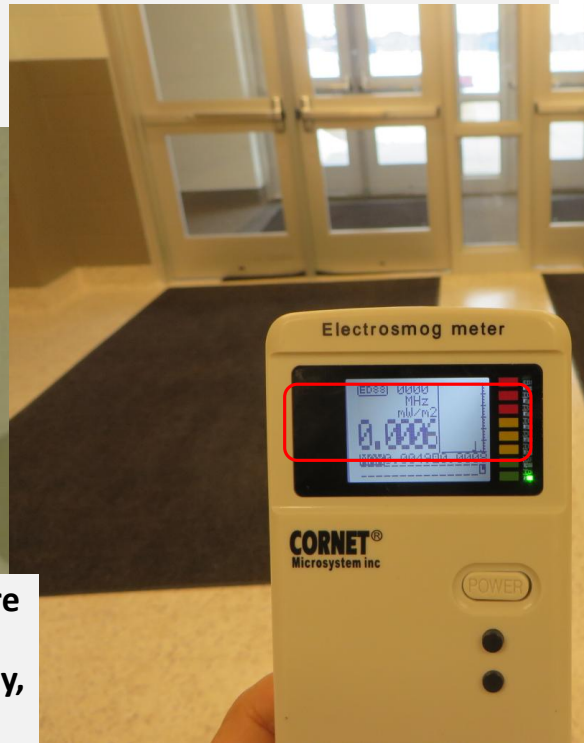
Radiation 1000 X higher under Wi-Fi Access Point

**Radiation Readings Highest Under Wi-Fi Access Point**



This is Saturday, when no devices are connected to Wi-Fi. When devices are connected to Wi-Fi on school day, it is even higher

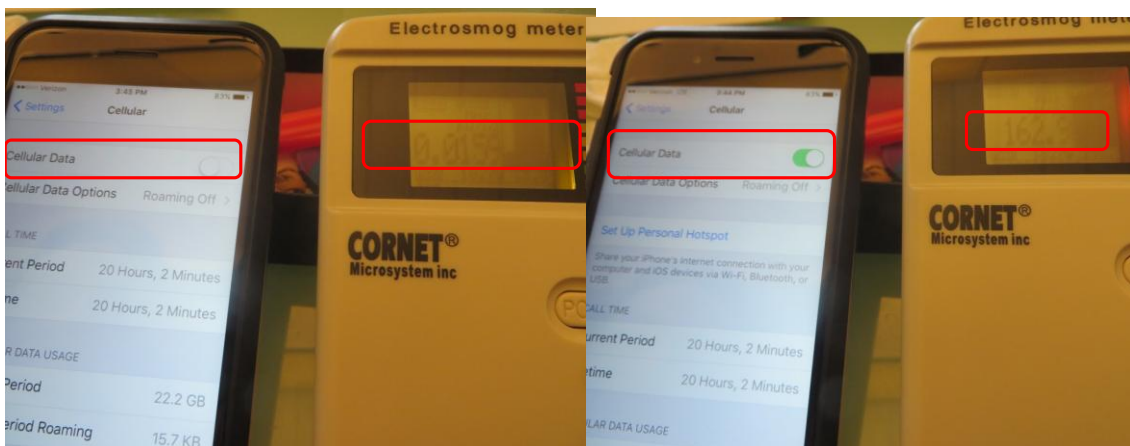
**Radiation Readings over 1000X lower in hallway**



# Radiation Very High from a Cell phone using LTE data iphone Radiation – LTE On vs.Off

LTE Antenna off

LTE cellular data ON



**When LTE antenna is off, RF radiation at 0.0159 mW/m2 = 0.00159uW/cm2**

**When LTE is ON, RF radiation at 10,000X+ higher at 162.9 mw/m2 = 16.29uW/cm2**

**To reduce your exposure to RF radiation, turn off LTE antenna when not using internet or put in airplane mode (shuts off all antennas)**

# ADA Recognizes EHS as Disability



Federal Register

Tuesday,  
September 3, 2002

Part II  
Architectural and  
Transportation  
Barriers Compliance  
Board

2002-09-03 11:00 AM EDT  
Americans With Disabilities Act (ADA)  
Accessibility Guidelines for Buildings and  
Facilities; Final Rule  
Americans with Disabilities Act (ADA)  
Accessibility Guidelines for Buildings and  
Facilities; Architectural Barriers Act (ABA)  
Accessibility Guidelines, Recreation  
Facilities; Supplemental Notice of  
Proposed Rulemaking

Electromagnetic hypersensitivity, aka EHS, is considered a disability under the ADA **"if they so severely impair the neurological, respiratory or other functions of an individual that it substantially limits one of more of the individual's major life activities"** (p. 56353 of ADA Accessibility Guidelines for Buildings and Facilities; Final Rule, September 2002 . <https://www.access-board.gov/attachments/article/586/recreation-rule.pdf>

The federal Access Board contracted the National Institute of Building Sciences (NIBS) to examine how to accommodate the needs of the electro sensitive in federally funded buildings. The 2005 NIBS Report IEQ . [http://web.archive.org/web/20060714175343/ieq.nibs.org/ieq\\_project.pdf](http://web.archive.org/web/20060714175343/ieq.nibs.org/ieq_project.pdf)

**On p. 51-52: accommodations given such as turning off cell phones and ability to turn off electrical equipment for those with EHS.**

**Cell Phones Turned Off:** *Protect those with electromagnetic sensitivities and others who may be adversely affected by electrical equipment.*

**Ability to turn off** or unplug computers and other electrical equipment by occupant or staff: *Protect those with electromagnetic sensitivities.*

*"People with electromagnetic sensitivities can experience debilitating reactions... from electromagnetic fields emitted by computers, cell phones, and other electrical equipment. The severity of sensitivities varies among people with electromagnetic sensitivities...According to the Americans with Disabilities Act (ADA) and other disability laws, public and commercial buildings are required to provide reasonable accommodations for those disabled by electromagnetic sensitivities. These accommodations are best achieved on a case-by-case basis"*

## IEQ Indoor Environmental Quality

A project of the National Institute of Building Sciences (NIBS) with funding support from The Architectural and Transportation Barriers Compliance Board (Access Board)



© 2005, National Institute of Building Sciences. All rights reserved.

Table of Contents	Page
Further Explanation of the Criteria for Conditions of Use	59
No Smoking	
Programs-Free	
Permitted-Free Indoor and Outdoor	
Lowest Toxic/Risk Cleaning Products	
No Excess Construction or Remodeling Including Carpet Installation	
Cell Phones Turned Off	
Ability to turn off or unplug computers and other electrical equipment by occupant or staff	
Ability to turn off fluorescent lighting by occupant or staff	